

# **Model7310 Series CLI Guide\_V1.00**

**V1.00**

**Sep.2018**

## Table of contents

1	General description.....	3
2	Access mode.....	3
3	How to access the interface .....	3
3.1	BY RS232 INTERFACE .....	3
3.1.1	Set Hyper Terminal.....	3
3.1.2	Click "Cancel" .....	4
3.1.3	Click "Yes" .....	5
3.1.4	Click "OK" .....	5
3.1.5	Name:.....	5
3.1.6	Click "Cancle" .....	6
3.1.7	Click "Yes" .....	7
3.1.8	Click "OK" .....	7
3.1.9	Choose port:.....	8
3.1.10	Choose Bits per second:19200;.....	8
3.1.11	Choose Flow control: None; click "OK" .....	9
3.1.12	The CLI interface.....	9
3.1.13	Press "Enter" .....	10
4	How to use CLI command .....	10
4.1	CLI Command List.....	10
4.2	system commands.....	11
4.2.1	showsysinfo.....	11
4.2.2	setdefault.....	12
4.2.3	reset .....	12
4.3	E1 commands.....	12
4.3.1	e1alarm .....	12
4.3.2	setvcn .....	13
4.3.3	showvcn .....	13
4.3.4	showvcmalarm .....	14
4.3.5	setgfp.....	14
4.3.6	showgfp .....	15
4.3.7	setvcg .....	15
4.3.8	showvcg .....	16
4.3.9	showsq .....	16
4.4	ETH commands.....	17
4.4.1	enableport .....	17
4.4.2	setport .....	17
4.4.3	showport.....	18
4.4.4	setstormfilter.....	18
4.4.5	showstormfilter .....	19
4.5	Remote commands .....	19
4.5.1	remotesysinfo .....	19
4.5.2	remotee1alarm .....	19

4.5.3 Remotevcmalarm .....	20
4.5.3remoteethstatus .....	21

## 1 General description

This document is intended to instruct in the basics of Model7310 configuration and maintenance. Prior experience with communication knowledge will make this document easier to understand but is not required.

CLI command can run in many terminal control programs, such as hyper terminal, etc.

## 2 Access mode

There are two ways involved in managing Model7310. One is by RS232 interface. The RS232 connection operates at 19200 baud, 8 data bits, 1 stop bit and no parity.

## 3 How to access the interface

### 3.1 BY RS232 INTERFACE

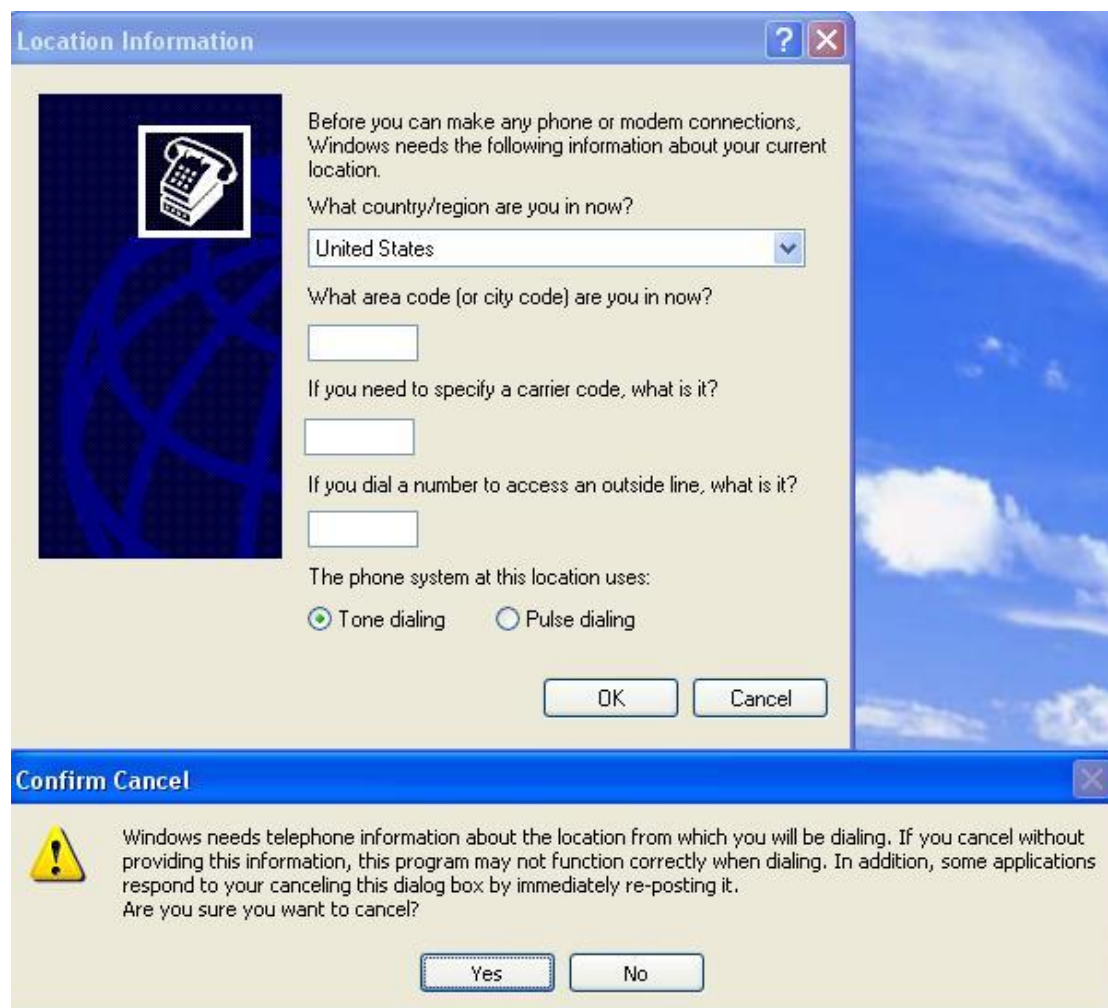
#### 3.1.1 Set Hyper Terminal



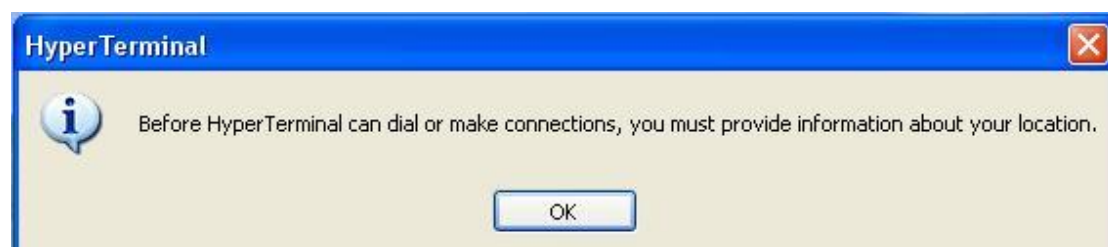
### 3.1.2 Click "Cancel"



### 3.1.3 Click "Yes"

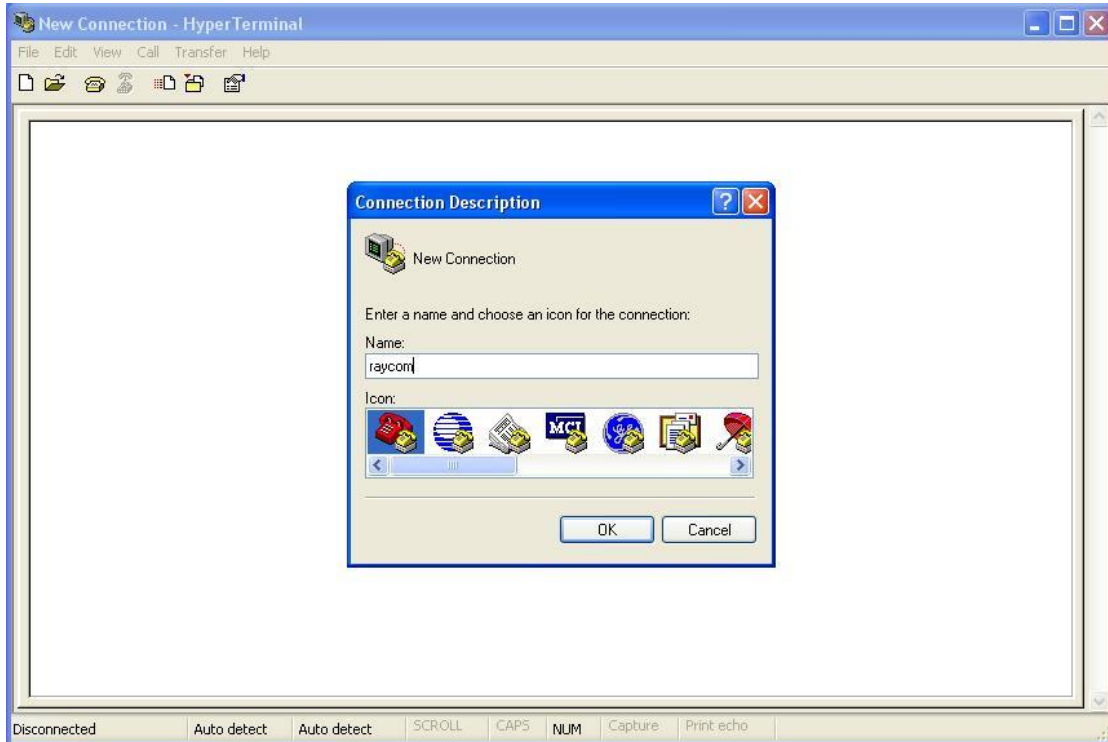


### 3.1.4 Click "OK"

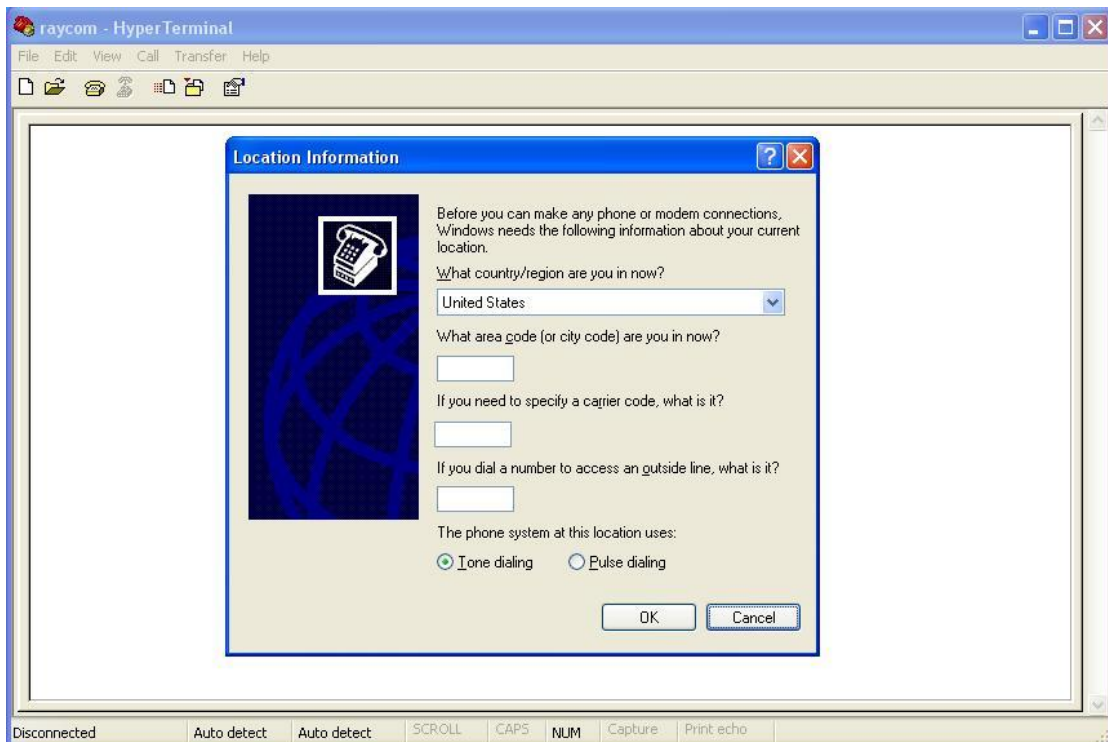


### 3.1.5 Name:

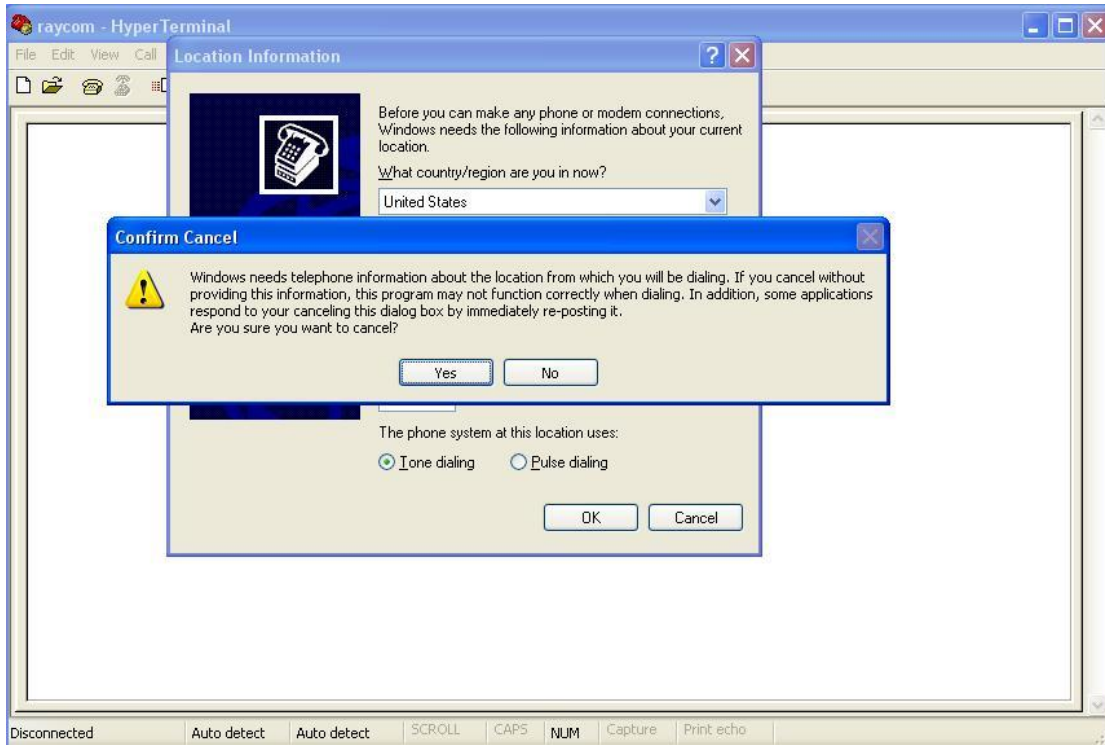
you can use number and letter as name. eg. "raycom" "122", then point OK.



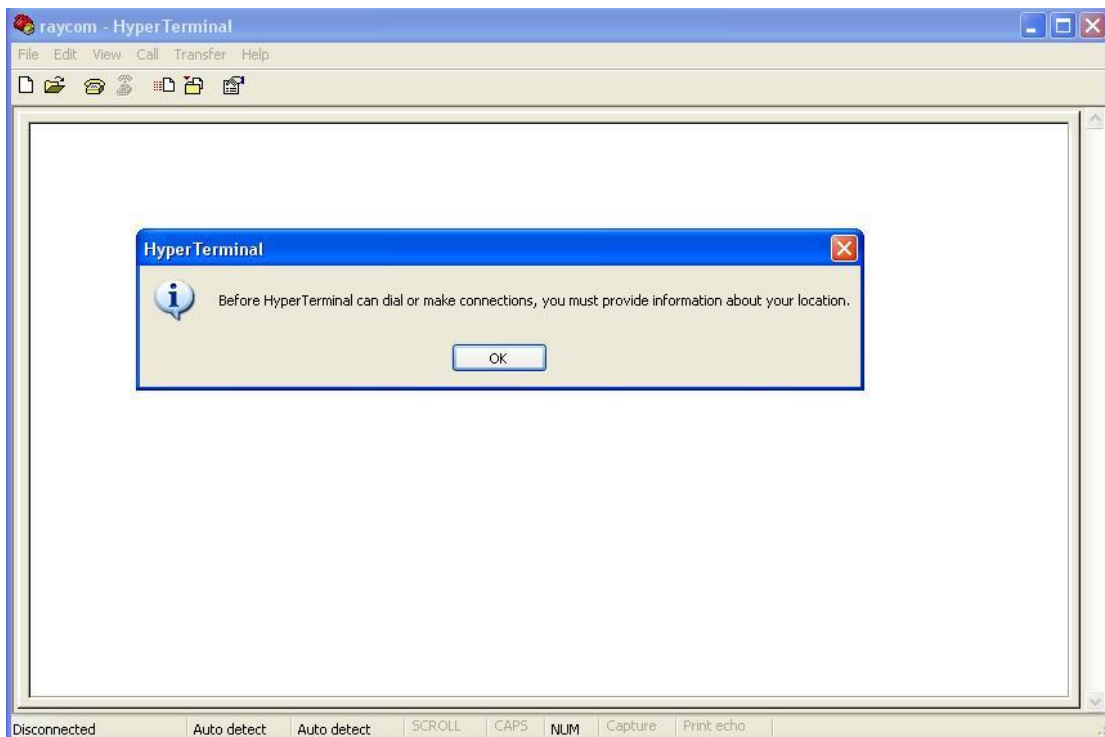
### 3.1.6 Click "Cancle"



### 3.1.7 Click "Yes"

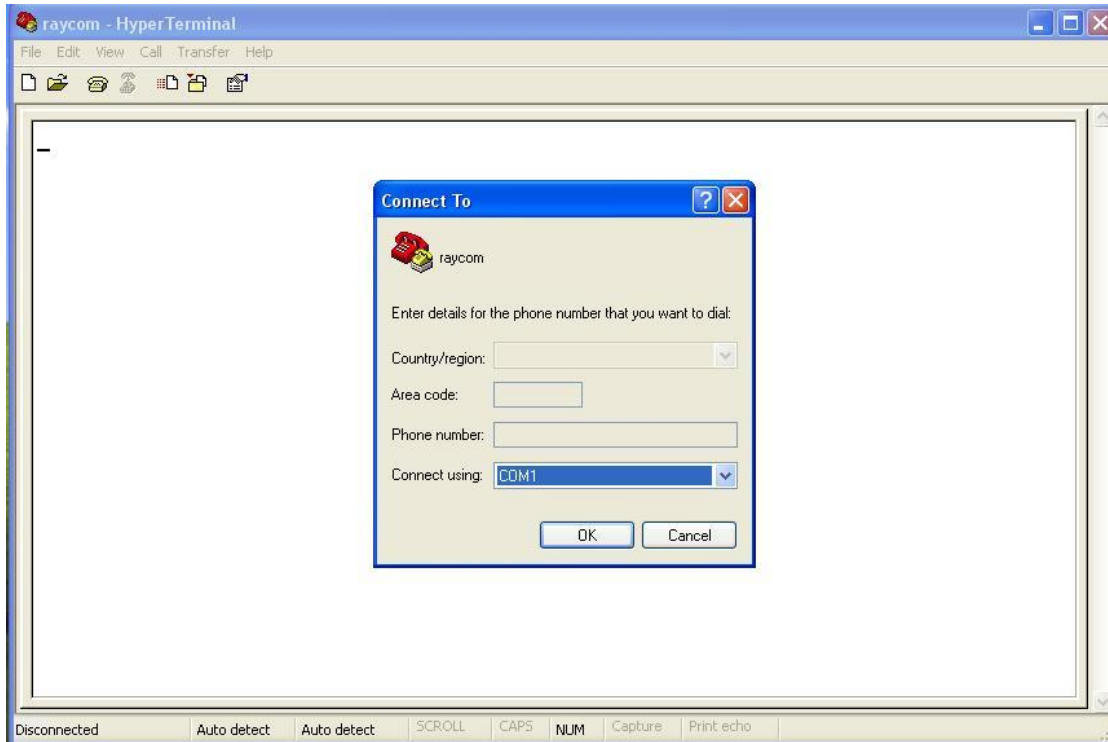


### 3.1.8 Click "OK"

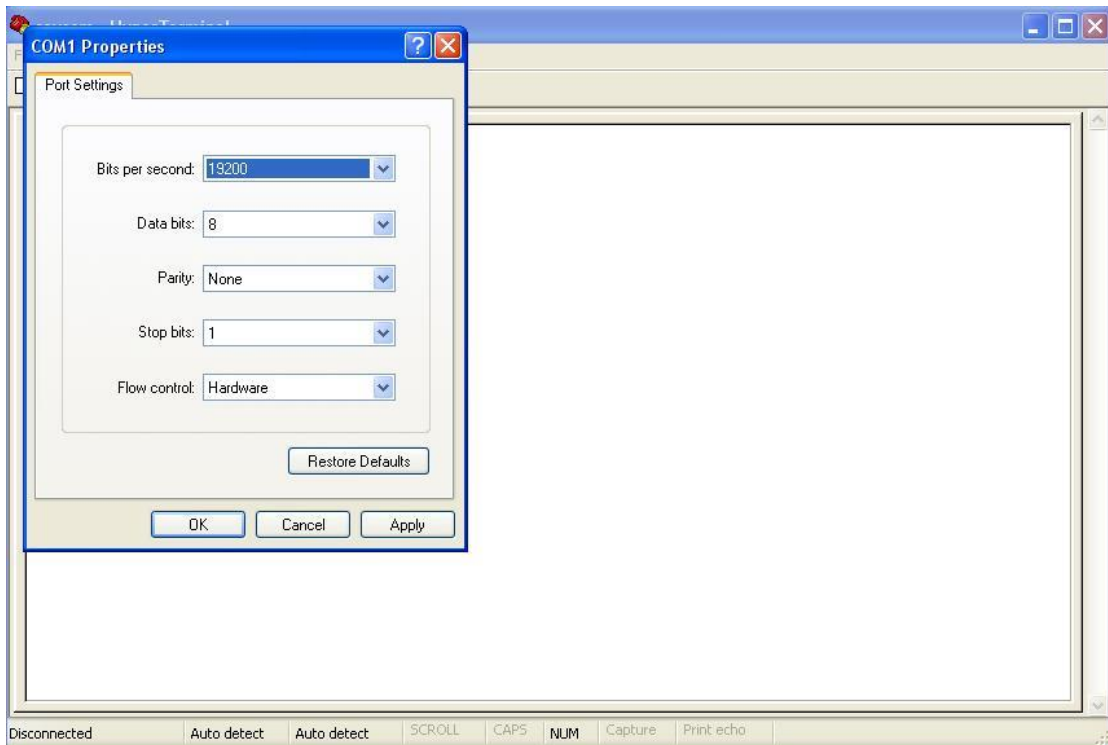


### 3.1.9 Choose port:

choose the port which connects equipment with pc via serial line.click "ok"

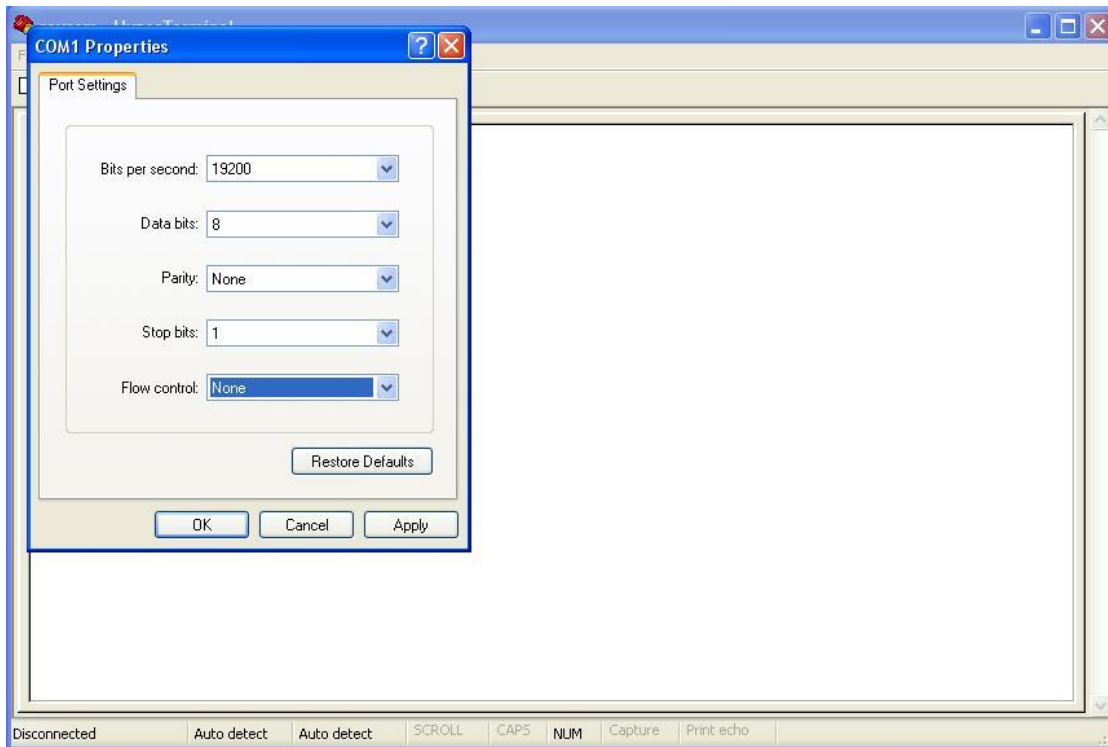


### 3.1.10 Choose Bits per second:19200;

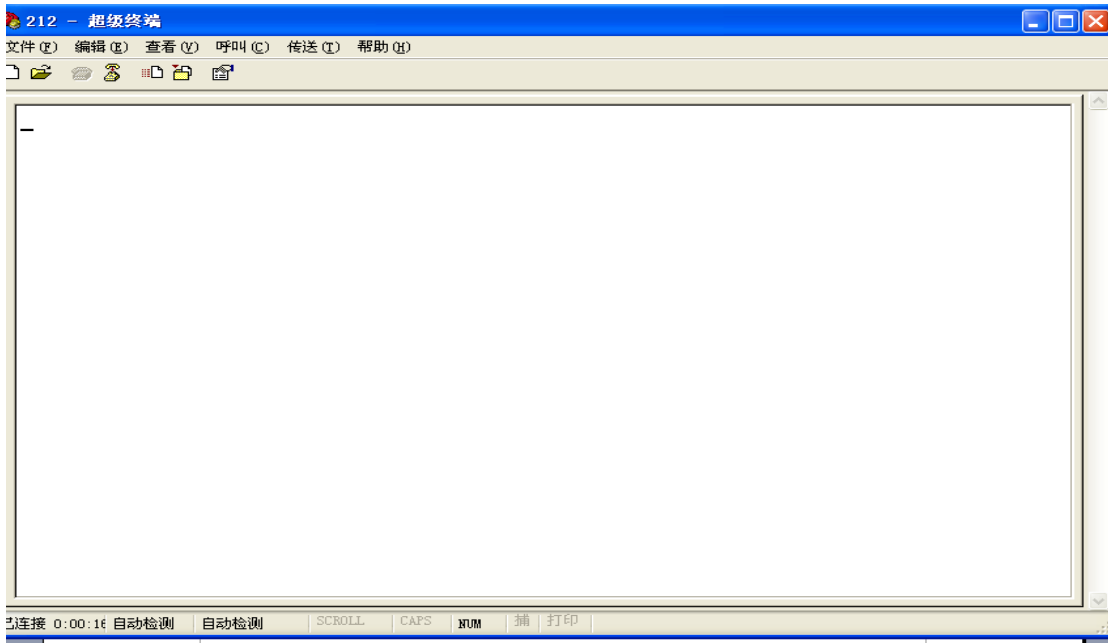




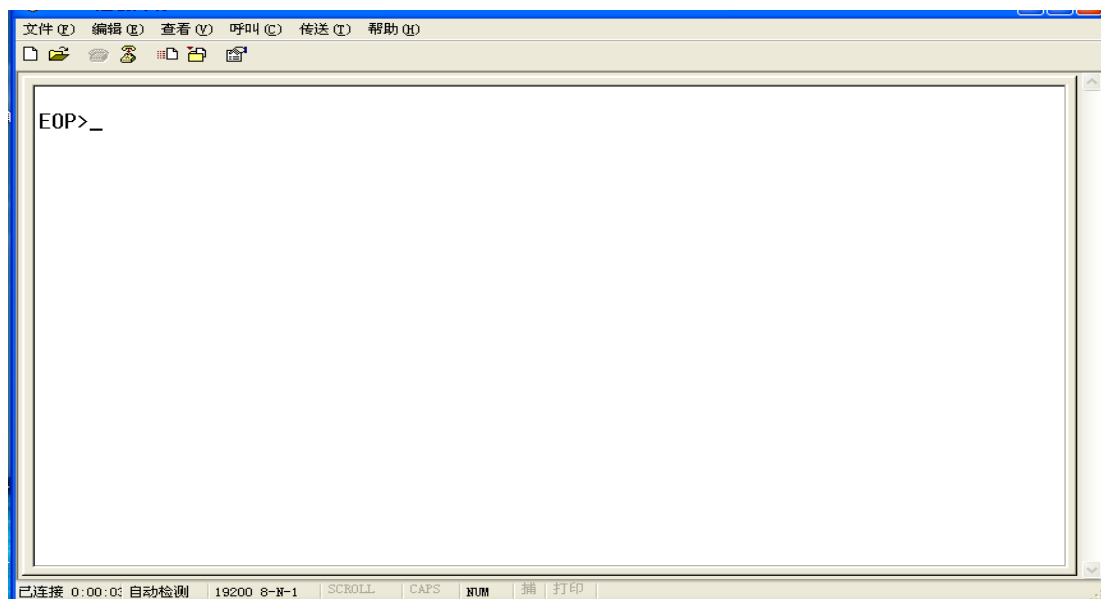
### 3.1.11 Choose Flow control: None; click "OK"



### 3.1.12 The CLI interface



## 3.1.13 Press "Enter"



## 4 How to use CLI command

### 4.1 CLI Command List

EOP>?

Command	Description
---------	-------------

```
=====
----- System basic configuration -----
?/help          To get a list of the commands for the system.
showsysinfo     View the system information.
setdefault      Configure the system settings in default.
reset           Perform a warm restart.
```

Please press "Enter" to continue.....

```
----- E1 interfaces configuration and display -----
e1alarm         View E1 tributary alarms.
setvcm          Configure E1 as available or unavailable for VCG.
showvcm         View if E1 are configured as available for VCG.
showvcmalarm   View alarms of VCAT member.
setgfp          Configure PFI, EXI of GFP.
showgfp        View PFI, EXI of GFP.
setvcg          Enable/Disable VCAT and LCAS.
showvcg        View configuration of VCG.
showsq          View SQ, GRP, CTRL of VCAT members.
```

Please press "Enter" to continue.....

```
-----Displays status and configuration of Ethernet switch-----
enableport     Enable/Disable Ethernet port.
setport        Configure Ethernet port.
showport       View Ethernet port configuration and working status.
setstormfilter Enable/disable broadcast storm filtering function.
showstormfilter View the configuration of broadcast storm filtering function.
```

Please press "Enter" to continue.....

```
-----Remote information-----
remotesysinfo      View the remote system information.
remotee1alarm      View retrmote E1 tributary alarms.
Remotevcmalarm     View alarms of remote VCAT member.
remoteethstatus    View remote Ethernet port status.
```

You can key "?" or "help" in the command line to get the list of the command as follows:

**【FORMAT】** : ? \n

**【EXPLANATION】** : To get a list of the commands for the system type '?' at the prompt.

**【PARAMETER】** : None

**【E.g.】**

For detailed command format, please key "? cmdname" or "help cmdname". See the following examples.

<FORMAT >: ? <command>

<EXPLANATION >: To get further information about any command, type the ? <space> followed by command.

<PARAMETER>:

<command>: Optional PARAMETER,Type the command which needs to help.

**【E.g.】**

EOP>? setvcg

<FORMAT >: setvcg <VCAT> <LCAS>

<EXPLANATION>: Enable/Disable the Virtual concatenation and LCAS

<PARAMETER>:

<VCAT>: enable|disable

<LCAS>: enable|disable

EOP>help setvcg

<FORMAT >: setvcg <VCAT> <LCAS>

<EXPLANATION>: Enable/Disable the Virtual concatenation and LCAS

<PARAMETER>:

<VCAT>: enable|disable

<LCAS>: enable|disable

## 4.2 system commands

### 4.2.1 showsysinfo

**【command】**

showsysinfo

**【FORMAT】**

showsysinfo

**【EXPLANATION】**

View the system information.

**【PARAMETERS】**

None

**【E.g.】**

EOP>showsysinfo

System : Bridge Device

System Hardware version : 1.00

System Software version : 1.00A1

Ethernet WAN number : 1

E1 number : 4  
 Ethernet LAN number : 3FE+1FX

## 4.2.2 setdefault

**【command】**

setdefault

**【FORMAT】**

setdefault

**【EXPLANATION】**

Configure the system settings in default.

**【PARAMETER】**

None

**【E.g.】**

EOP>setdefault

Default setting has succeeded! Please reset the system.

## 4.2.3 reset

**【command】**

reset

**【FORMAT】**

reset

**【EXPLANATION】**

Perform a warm restart.

**【PARAMETERS】**

None

**【E.g.】**

EOP>reset

The system will reset in a few seconds! Please Wait.....

## 4.3 E1 commands

### 4.3.1 e1alarm

**【command】**

e1alarm

**【FORMAT】**

e1alarm

**【EXPLANATION】**

View alarms of E1 ports, including LOS, AIS, LOF, LOMF, CV.

**【PARAMETER】**

None

**【E.g.】**

EOP>e1alarm

E1	LOS	AIS	LOF	LOMF	CV
1	alarm	alarm	alarm	alarm	alarm
2	alarm	alarm	alarm	alarm	alarm

3	alarm	alarm	alarm	alarm	alarm
4	alarm	alarm	alarm	alarm	alarm
5	alarm	alarm	alarm	alarm	alarm
6	alarm	alarm	alarm	alarm	alarm
7	alarm	alarm	alarm	alarm	alarm
8	alarm	alarm	alarm	alarm	alarm
9	alarm	alarm	alarm	alarm	alarm
10	alarm	alarm	alarm	alarm	alarm
11	alarm	alarm	alarm	alarm	alarm
12	alarm	alarm	alarm	alarm	alarm
13	alarm	alarm	alarm	alarm	alarm
14	alarm	alarm	alarm	alarm	alarm
15	alarm	alarm	alarm	alarm	alarm
16	alarm	alarm	alarm	alarm	alarm

### 4.3.2 setvcm

**【command】**

setvcm

**【FORMAT】**

setvcm <port> <send> <receive>

**【EXPLANATION】**

Configure E1 as available or unavailable for VCG.

**【PARAMETERS】**

<port>: 1-16

<send>: enable | disable

<receive>: enable | disable

**【E.g.】**

EOP>setvcm 2 disable disable

Send : VCAT 2 : disable

Receive: VCAT 2 : disable

### 4.3.3 showvcm

**【command】**

showvcm

**【FORMAT】**

showvcm

**【EXPLANATION】**

View if E1 are configure as available for VCG.

**【PARAMETER】**

None

**【E.g.】**

EOP>showvcm

E1	SEND	RECEIVE
1	enable	enable

2	disable	disable
3	enable	enable
4	enable	enable
5	enable	enable
6	enable	enable
7	enable	enable
8	enable	enable
9	enable	enable
10	enable	enable
11	enable	enable
12	enable	enable
13	enable	enable
14	enable	enable
15	enable	enable
16	enable	enable

### 4.3.4 showvcmalarm

**【command】**

showvcmalarm

**【FORMAT】**

showvcmalarm

**【EXPLANATION】**

View alarms of VCAT member.

**【PARAMETER】**

None

**【E.g.】**

EOP>showvcmalarm

E1	IN USE	CRC ERROR	FAIL	LOMF1	LOMF2
1	no	no alarm	alarm	alarm	alarm
2	yes	no alarm	no alarm	alarm	alarm
3	no	no alarm	alarm	alarm	alarm
4	no	no alarm	alarm	alarm	alarm
5	no	no alarm	alarm	alarm	alarm
6	no	no alarm	alarm	alarm	alarm
7	no	no alarm	alarm	alarm	alarm
8	no	no alarm	alarm	alarm	alarm
9	no	no alarm	alarm	alarm	alarm
10	no	no alarm	alarm	alarm	alarm
11	no	no alarm	alarm	alarm	alarm
12	no	no alarm	alarm	alarm	alarm
13	no	no alarm	alarm	alarm	alarm
14	no	no alarm	alarm	alarm	alarm
15	no	no alarm	alarm	alarm	alarm
16	no	no alarm	alarm	alarm	alarm

### 4.3.5 setgfp

**【command】**

```
setgfp
```

**【FORMAT】**

```
setgfp <PFI> <EXI> <PSCRD> <HSCRD>
```

**【EXPLANATION】**

Config the PSCRD, HSCRD, PFI, EXI of GFP.

**【PARAMETERS】**

<PFI>: 0-1

<EXI>: 0-15

<PSCRD>: enable | disable

<HSCRD>: enable | disable

**【E.g.】**

```
EOP>setgfp 1 3 disable enable
```

```
PFI = 1
```

```
EXI = 3
```

```
PSCRD: disable
```

```
HSCRD: enable
```

### 4.3.6 showgfp

**【command】**

```
showgfp
```

**【FORMAT】**

```
showgfp
```

**【EXPLANATION】**

View the PSCRD , HSCRD , PTI , PFI , EXI of the GFP.

**【PARAMETER】**

None

**【E.g.】**

```
EOP>showgfp
```

```
PSCRD: disable
```

```
HSCRD: enable
```

```
GFP PTI = 0
```

```
GFP PFI = 1
```

```
GFP EXI = 3
```

```
GFP_SYN = normal
```

### 4.3.7 setvcg

**【command】**

```
setvcg
```

**【FORMAT】**

```
setvcg <VCAT> <LCAS>
```

**【EXPLANATION】**

Enable/Disable the Virtual concatenation and LCAS.

## 【PARAMETERS】

<VCAT>: enable | disable

<LCAS>: enable | disable

## 【E.g.】

EOP>setvcg enable enable

Send : VCAT: enable | LCAS: enable

Receive : VCAT: enable | LCAS: enable

### 4.3.8 showvcg

#### 【command】

showvcg

#### 【FORMAT】

showvcg

#### 【EXPLANATION】

View configuration of VCG, including maximum delay, VCG alarm and whether VCAT&LCAS are active.

#### 【PARAMETER】

None.

## 【E.g.】

EOP>showvcg

-----VCG & LCAS ENABLE-----

Send : VCAT: enable | LCAS:enable

Receive : VCAT: enable | LCAS: enable

-----MAX DELAY-----

Max delay = 224 ms

-----RECEIVE VCG ALARM-----

Loa: normal | gidm: normal

### 4.3.9 showsq

#### 【command】

showsq

#### 【FORMAT】

showsq

#### 【EXPLANATION】

View the SQ, GRP, CTRL of VCAT members.

#### 【PARAMETER】

None

## 【E.g.】

EOP>showsq

TrId	TX	GROUP	TX-QUEUE	TX-CTRL	RX	RX-QUEUE	RX-CTRL
1	on	on	0	not use	on	15	delete
2	on	on	1	not use	on	15	delete
3	on	on	2	not use	on	15	delete
4	on	on	3	not use	on	15	delete
5	on	on	4	not use	on	15	delete



6	on	on	5	not use	on	15	delete
7	on	on	6	not use	on	15	delete
8	on	on	7	not use	on	15	delete
9	on	on	8	not use	on	15	delete
10	on	on	9	not use	on	15	delete
11	on	on	10	not use	on	15	delete
12	on	on	11	not use	on	15	delete
13	on	on	12	not use	on	15	delete
14	on	on	13	not use	on	15	delete
15	on	on	14	not use	on	15	delete
16	on	on	15	not use	on	15	delete

CTRL:

0-LCAS off ; 1-add ; 2-normal ; 3-normal (EoQ), End of Queue  
5-delete ; 15-not use

## 4.4 ETH commands

### 4.4.1 enableport

**【command】**

enableport

**【FORMAT】**

enableport <port> <state>

**【EXPLANATION】**

Enable/Disable Ethernet port.

**【PARAMETER】**

<port>: 1-4

<state>: enable | disable

**【E.g.】**

EOP>enableport 2 disable  
Ethernet port 2: disable

### 4.4.2 setport

**【command】**

setport

**【FORMAT】**

setport <port> <auto> <speed> <duplex> <flow>

**【EXPLANATION】**

Configure Ethernet port, including autonegotiation, speed, duplex mode, and flow control.

**【PARAMETERS】**

<port>: 1-4

<auto>: enable | disable

<speed>: 10 | 100

<duplex>: full | half

<flow>: enable | disable

**【E.g.】**

EOP>setport 1 disable 10 full enable

PORT	AN	SPEED	DUPLEX	FLOW-CONTROL
1	disable	10	full	enable.

### 4.4.3 showport

**【command】**

showport

**【FORMAT】**

showport

**【EXPLANATION】**

View Ethernet port configuration, including autonegotiation, speed, duplex mode, and flow control.

**【PARAMETER】**

None

**【E.g.】**

EOP>showport

Configure settings:

ID	AN	SPEED	DUPLEX	FLOW CONTROL
1	enable	--	--	enable
2	enable	--	--	enable
3	enable	--	--	enable
4	disable	100	full	enable

Current Status:

ID	STATUS	SPEED	DUPLEX	NOF-STATUS
1	Linkdown	--	--	--
2	Linkdown	--	--	--
3	Linkdown	--	--	--
4	Link	100	full	no alarm

### 4.4.4 setstormfilter

**【command】**

setstormfilter

**【FORMAT】**

setstormfilter<option>

**【EXPLANATION】**

Enable/disable broadcast storm filtering function.

**【PARAMETERS】**

<option>:enable | disable.

**【E.g.】**

EOP>setstormfilter enable

Set Ethernet storm filter :enable.

Executed Successfully.

## 4.4.5 showstormfilter

### 【command】

showstormfilter

### 【FORMAT】

showstormfilter

### 【EXPLANATION】

View the configuration of broadcast storm filtering function.

### 【PARAMETERS】

None

### 【E.g.】

ROP>showstormfilter

Ethernet Storm filter:enable.

## 4.5 Remote commands

### 4.5.1 remotesysinfo

#### 【command】

remotesysinfo

#### 【FORMAT】

remotesysinfo

#### 【EXPLANATION】

View the remote system information.

#### 【PARAMETERS】

None

#### 【E.g.】

EOP>remotesysinfo

E1 number : 16

Ethernet LAN number : 3FE+1FX

### 4.5.2 remotee1alarm

#### 【command】

remotee1alarm

#### 【FORMAT】

remotee1alarm

#### 【EXPLANATION】

View remote alarms of E1 ports, including LOS, AIS, LOF, LOMF, CV.

**【PARAMETER】**

None

**【E.g.】**

EOP>remotee1alarm

E1	LOS	AIS	LOF	LOMF	CV
1	alarm	no alarm	no alarm	no alarm	no alarm
2	alarm	no alarm	no alarm	no alarm	no alarm
3	alarm	no alarm	no alarm	no alarm	no alarm
4	alarm	no alarm	no alarm	no alarm	no alarm
5	alarm	no alarm	no alarm	no alarm	no alarm
6	alarm	no alarm	no alarm	no alarm	no alarm
7	alarm	no alarm	no alarm	no alarm	no alarm
8	alarm	no alarm	no alarm	no alarm	no alarm
9	alarm	no alarm	no alarm	no alarm	no alarm
10	alarm	no alarm	no alarm	no alarm	no alarm
11	alarm	no alarm	no alarm	no alarm	no alarm
12	alarm	no alarm	no alarm	no alarm	no alarm
13	alarm	no alarm	no alarm	no alarm	no alarm
14	alarm	no alarm	no alarm	no alarm	no alarm
15	alarm	no alarm	no alarm	no alarm	no alarm
16	alarm	no alarm	no alarm	no alarm	no alarm

### 4.5.3 remotevcmalarm

**【command】**

remotevcmalarm

**【FORMAT】**

remotevcmalarm

**【EXPLANATION】**

View alarms of remote VCAT member.

**【PARAMETER】**

None

**【E.g.】**

EOP> remotevcmalarm

VCM	ALARM
1	alarm
2	alarm
3	alarm
4	alarm
5	alarm
6	alarm
7	alarm
8	alarm
9	alarm
10	alarm
11	alarm
12	alarm

- 13 alarm
- 14 alarm
- 15 alarm
- 16 alarm

remotevcmalarm include :IN-USE,CRC-ERROR, FAIL, LOMF1, LOMF2.

### 4.5.3 remoteethstatus

**【command】**

remoteethstatus

**【FORMAT】**

remoteethstatus

**【EXPLANATION】**

View remote Ethernet port status.

**【PARAMETER】**

None

**【E.g.】**

EOP> remoteethstatus

Configure settings:

ID	EHT-STATUS	NOP-STATUS
1	Link	--
2	disable	--
3	Linkdown	--
4	Linkdown	alarm